

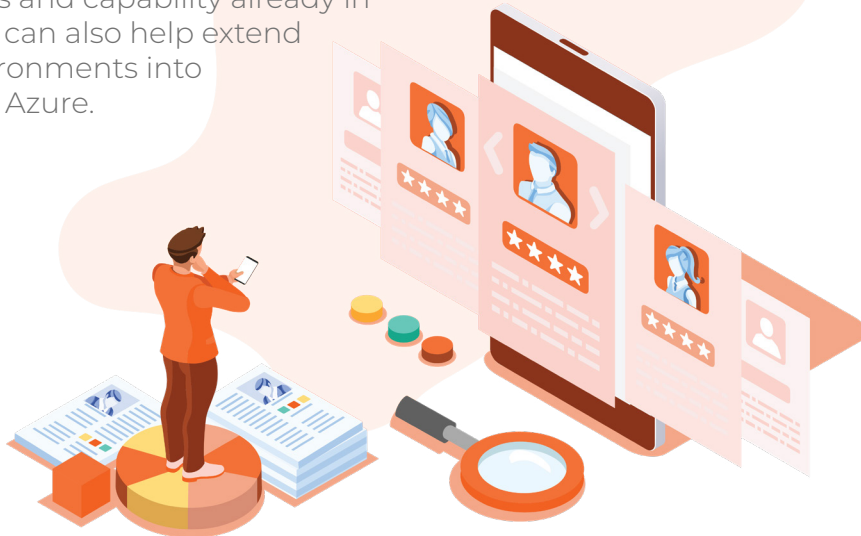
CITRIX ON AZURE FAST START

CITRIX ON AZURE FAST START

Citrix on Azure Fast Start is designed to help organisations rapidly stand up an operational Citrix environment in Microsoft Azure to provide secure, user-friendly, high performing and manageable remote access solutions based on best-of-breed, trusted and proven industry-leading technology.

With this service you can quickly and efficiently stand up workloads provisioned and managed by the Citrix Cloud Virtual Apps and Desktops Service, or can stand up a new greenfield environment based on the Citrix Virtual Apps and Desktops 1912 LTSR solution with all components managed by either your IT team or Insentra in Microsoft Azure.

If you are an existing Citrix customer with workloads and capability already in place, we can also help extend your environments into Microsoft Azure.



Citrix solutions either hosted on or extended into Microsoft Azure provide flexible, efficient, effective desktop and application delivery solutions for your user base.

Whether you need to quickly scale your applications and desktops due to an unforeseen pandemic, merger, acquisition or for disaster recovery, to decrease capital expenditure or to reduce IT support burden, a deployment method is available to meet your requirements.

Hosting a Citrix environment in Azure - either workloads, the management layer, or both - removes the need for expensive on-premises server hardware and storage. Azure offers a rapid deployment platform, with a consumption-based pay-as-you-go model, perfect for addressing the current challenges introduced in the changing climate.

WHAT ARE THE PREREQUISITES FOR THE FAST START SERVICES?

To facilitate the Citrix on Azure Fast Start service, organisations will be required to:

- Have appropriate Citrix Licencing – Either Citrix Cloud or traditional Citrix perpetual licence capability
- Provide technical representation from appropriate teams during the engagement (e.g. Citrix, Networking, Security, Applications, Operations)
- Provide access to an existing Azure Subscription with sufficient resource capacity (quotas) in place to host the appropriate workloads
- Provide connectivity from Azure to the appropriate application hosting environments, be it in the Cloud, or on-premises

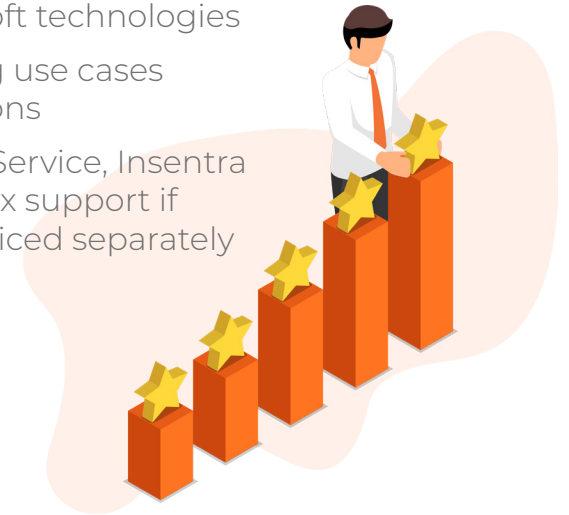
CITRIX ON AZURE FAST START

The Citrix on Azure Fast Start is a collaborative engagement designed to get you up and running within 5 days. The core components of Citrix will be deployed and configured including the following:

- Host design workshop and provide a high-level conceptual design outline
- Develop a list of prerequisites for the build tasks
- Deploy a baseline configuration of Citrix Virtual Apps and Desktops, or Citrix Cloud Virtual Apps and Desktops Service
- Deployment of a single resource location in Azure with for single-use case with one image (applications to be installed by the organisation) – either Windows 10, Windows 10 Multi-Session, Windows Server 2016/2019 depending on license entitlements
- Remote access provided by either Citrix Application Delivery Controllers (ADC) or Citrix Gateway Service depending on the platform selected
- A summary document outlining the configurations deployed including a how-to guide for managing the image within the environment

BENEFITS AND OUTCOMES

- Quick access to the latest Citrix Virtual Apps & Desktop technologies
- Rapid deployment of rich applications for remote usage
- Ability to deploy workloads in Microsoft Azure
- Valuable shadowing and operational handover time with Insentra Consulting resources who specialise in both Citrix and Microsoft technologies
- Gain validation of existing use cases managed by Citrix solutions
- Further to the Fast Start Service, Insentra can provide ongoing Citrix support if required, which will be priced separately



If you are looking to get a Citrix on Azure solution deployed and operational, and would like to take advantage of our Citrix on Azure Fast Start Service, contact your chosen IT Partner, or contact info@insentragroup.com to register your interest and request a call from one of our architects.