

AZURE VIRTUAL DESKTOP (AVD)

FAST START

Many organisations have a requirement to provide a remote working solution for their teams who are now working from home because of the COVID-19 pandemic. AVD Fast Start (formerly known as Windows Virtual Desktop Fast Start) is designed to provide rapid establishment of a virtual desktop environment to ensure rich applications can be easily accessed by remote workers. Working with your chosen partner we can enable a WVD deployment in days.

Azure Virtual Desktop is a comprehensive desktop and app virtualisation service running in the cloud. AVD Fast Start provides a scalable Virtual Desktop Infrastructure (VDI) delivering simplified management, multi-session Windows 10, optimisations for Office 365 ProPlus, and support for Remote Desktop Services (RDS) environments all deployed within days.



AVD CUSTOMER PROFILE

Organisations needing to rapidly deliver a secure, reliable and scalable remote desktop solution whilst ensuring a consistent and reliable desktop experience. Typical applicable scenarios:

- No current VDI solution for remote access
- Little to no burst capacity for existing VDI solution (provides the ability to expand beyond an existing VDI solution)
- Core dependency on Windows 7 (only supported solution)
- Customers looking at Disaster Recovery (DR) scenarios for desktops and data

WHAT ARE THE REQUIREMENTS FOR AVD?

To take advantage of the Fast Start for AVD we need to ensure you have the following:

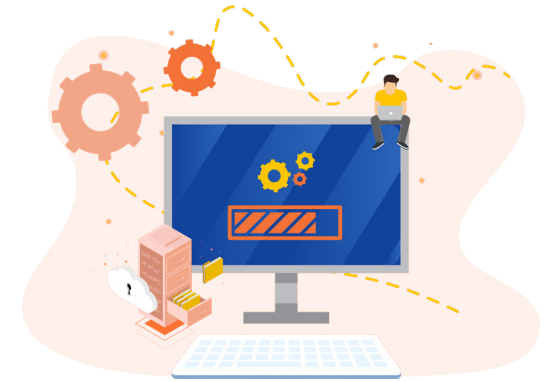
- AVD license entitlements
 - » Microsoft 365 E3, E5, A3, A5, F1, Business
 - » Windows E3, E5, A3, A5
 - » Windows 10 Enterprise Subscription
- Azure subscription
- Existing Azure AD Connect deployment
- Customers with no Azure subscription can create a PAYG subscription (useful for disaster recovery, bursting and/or limited use)

AZURE VIRTUAL DESKTOP (AVD) FAST START

This offering is specific to AVD to ensure the balance between full virtual desktops and rich applications is catered for. We call this, Fast Start for AVD and the service includes:

- Design thinking workshop including:
 - » Solution design overview – creating the building blocks for success
 - » Overview of AVD components including Azure environment, virtual networks, Azure AD Domain Services, storage, VM update management etc.
 - » Overview of the provisioning process
 - » Overview of solution scaling (Bursting to more desktops or applications)
 - » Understanding or defining user personas to align to desktop and applications requirements
 - » Process for Azure cost management and reporting
 - » Explore support requirements
 - » Understand any requirements for management of services of solutions
 - » Overview of optional value add services
- AVD Fast Start Deployment
 - » Stand up a self-contained Azure environment (virtual network, Azure AD Domain Services, storage, VM update management, inventory) in a single region
 - » Stand up two (2) AVD host pools – personal desktops (i.e. persistent) on Windows 10 and/or pooled on Windows 10 multi-session

- » The Image will include:
 - » Windows 10 Enterprise
 - » Microsoft Visual C++ Redistributables / .NET Framework
 - » Microsoft FSLogix Agent (FSLogix Containers)
 - » Microsoft Edge
 - » Microsoft Office 365 ProPlus
 - » Microsoft Teams
 - » Microsoft OneDrive
 - » Adobe Acrobat Reader DC
 - » Implement VM scaling for pooled desktop
 - » Delivery of two (2) client provided compatible pre-packaged applications
- Assumptions
 - » Application packaging is not included in this service
 - » Azure AD connect has been configured



If you are looking to get AVD configured and would like to take advantage of our AVD Fast Start Service, contact your chosen IT Partner, or contact info@insentragroup.com to register your interest and request a call from one of our Architects.